

MATURE NW

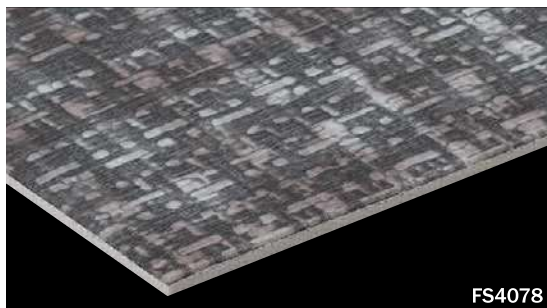
category:low-maintenance vinyl sheet

No need to apply the wax. Just by easy cleaning, beautiful appearance can be maintained for long. With its authentic design, MATURE NW can work well in any application.



Specification	overall thickness	2.0mm	width×length	1820mm×20m
	others	0.5mm Wear Layer / Antibacterial & Antivirus Finished / Highly Durable UV-Coated Surface		
JIS Registered No.	No. GB0506143 (JIS A 5705 Vinyl Sheet Flooring)			
Packing	20m/roll			
Net Weight	102.0kg/roll			
Performance	Wear Resistance	(EN649) Group T		
Recommended Adhesive from TOLI	dried mortar and concrete	Eco Royal Cement, Eco AR600		
	humid mortar and concrete	Epo Gray ST, US Cement, US Cement (less-smelly), US200		
	TOLI UNDERLAY SHEET	US Cement, US Cement (less-smelly), US200		
Welding/Seam Finish	<ul style="list-style-type: none"> ◆Welding rod for heat-welding (antibacterial finished) is available on a color-by-color basis. ◆Seam sealer like TOLI Super Seam Liquid can work as well. ◆JOINT SHIELD method (JS Method) by TOLI JOINT SHIELD is also applicable. 			
Notes on Installation	<ul style="list-style-type: none"> ◆Seams should be heat-welded or finished with a seam sealing bond. TOLI JOINT SHIELD can also work. ◆TOLI JOINT SHIELD can also work on the top of TOLI UNDERLAY SHEET, but when partial weight will be put on the floor (such as heavy stuff or casters), the seam joints should not be finished with TOLI JOINT SHIELD. ◆When you install 2 different sheets, each edge should be jointed at the seam. (Do not cut in the middle of the sheet.) ◆Please do not use the urethane adhesive other than US Cement, US Cement (less-smelly), US200. ◆For one week after installation, direct sunlight, sudden change of temperature due to air conditioning, and water washing should be avoided. ◆As the sub-floor material, the underlayment like TOLI UNDERLAY SHEET (page 283) is also workable. Apply the same adhesive for both upside and downside of the underlayment. Please note that the durability to dynamic load will be degraded when you install with the underlayment. ◆When you install MATURE NW in the places where rollaway beds are used (e.g. a patient room of the hospital, a living room of the welfare facility and so forth), the epoxy adhesive such as TOLI Epo Gray ST and urethane adhesive such as US Cement, US Cement (less-smelly), US200 should be used even if the humidity of the sub-floor is less than 8%. 			
Recommended Way of Maintenance from TOLI	<ul style="list-style-type: none"> ◆No need to apply the maintenance wax on the surface. Clean the floor every day with an auto scrubber or a wet rag wrung out tightly. Use the detergent for fixed contamination. ◆Even if the wax is applied on the surface, it does not affect the quality of NW series. ◆For a large facility, an abstergent auto scrubber is more recommendable. ◆High speed buffing should be avoided. Otherwise highly durable UV coating will be abraded. 			
Others	<ul style="list-style-type: none"> ◆At the entrance of the building, the dust control mat should be laid in order to avoid soils and sands from outside. ◆Please be aware that some rubber casters might cause color-contamination. ◆Please note that the product has the indigenous odor from its materials. 			

MADE IN JAPAN



FS4078

◆ **Antibacterial Performance** <in accordance with JIS Z 2801>
 In JIS testing criteria, when the value is more than 2.0, the product has sufficient antibacterial property.

	Escherichia Coli	Staphylococcus Aureus	MRSA
MATURE NW	More than 2.0	More than 2.0	More than 2.0

☆ Conducted by KAKEN TEST CENTER



FS4001

OAK



FS4002



FS4003



FS4004

PINE



FS4005



FS4006

HERRINGBONE



FS4007

HERRINGBONE



FS4008

HERRINGBONE



FS4009

OSB



FS4010

OSB

MATURE NW

category: low-maintenance vinyl sheet



FS4011



FS4012 OAK



FS4013



FS4014 PINE



FS4015 OAK



FS4016 OAK



FS4017 OAK



FS4018 OAK



FS4019 OAK



FS4020 OAK



FS4021 OAK



FS4022 OAK



FS4023 OAK



FS4024 OAK



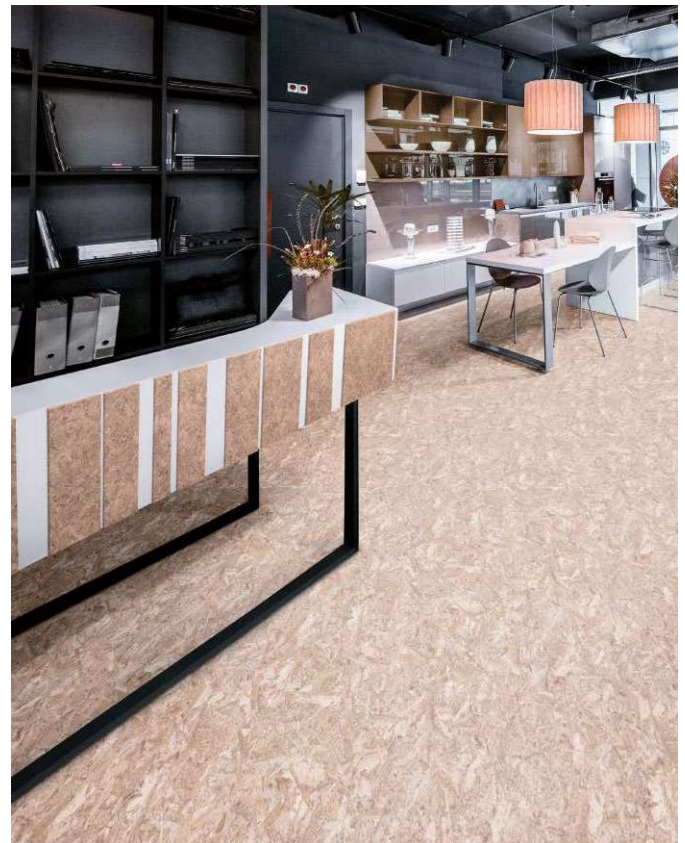
FS4025 OAK



FS4026 OAK



▲ FS4002



▲ FS4009

Vinyl Sheet

MATURE NW

category: low-maintenance vinyl sheet

No need to apply the wax. Just by easy cleaning, beautiful appearance can be maintained for long. With its authentic design, MATURE NW can work well in any application.



Specification	overall thickness	2.0mm	width×length	1820mm×20m
	others	0.5mm Wear Layer / Antibacterial & Antivirus Finished / Highly Durable UV-Coated Surface		
JIS Registered No.	No. GB0506143 (JIS A 5705 Vinyl Sheet Flooring)			
Packing	20m/roll			
Net Weight	102.0kg/roll			
Performance	Wear Resistance	(EN649) Group T		
Recommended Adhesive from TOLI	See page 296.			
Welding/Seam Finish	See page 296.			
Notes on Installation	See page 296.			
Recommended Way of Maintenance from TOLI	See page 296.			
Others	See page 296.			

MADE IN JAPAN



FS4027 WALNUT



FS4028 WALNUT



FS4029 WALNUT



FS4030 WALNUT



FS4031 CHERRY



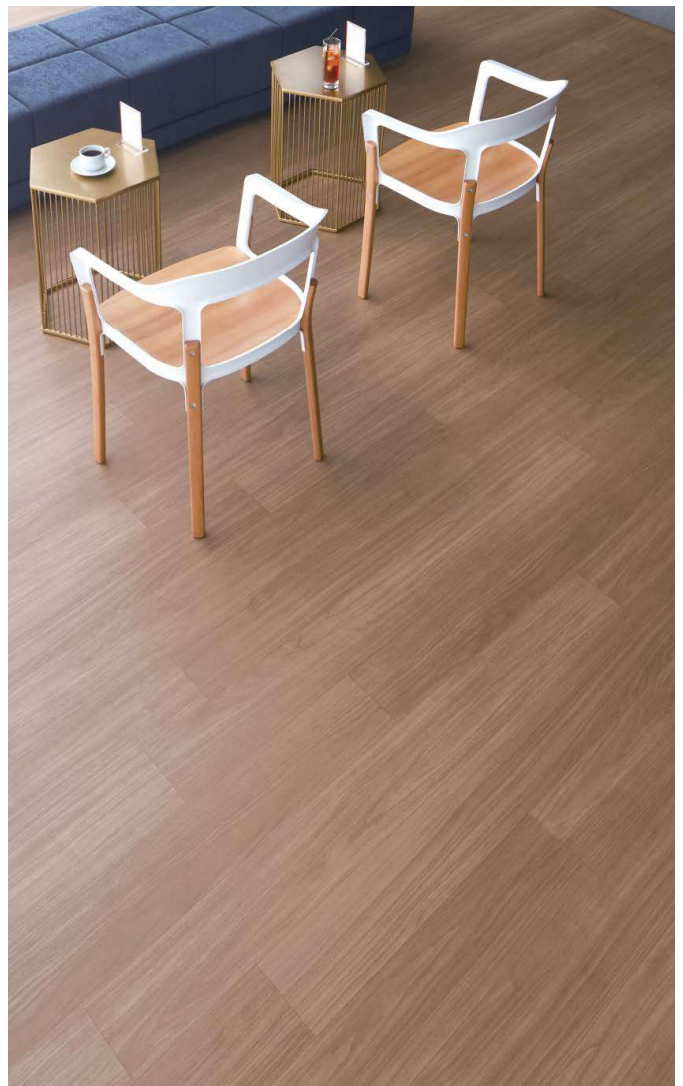
FS4032 MAPLE



FS4033 MAPLE



FS4034 BEECH



▲ FS4027

MATURE NW

category: low-maintenance vinyl sheet



FS4035 BEECH



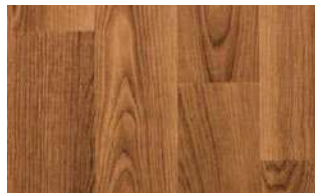
FS4036 JAPANESE CYPRESS



FS4037 BIRCH



FS4038 BIRCH



FS4039 BIRCH



FS4040 MORTAR



FS4041 MORTAR



FS4042 CONCRETE



FS4043 CONCRETE



FS4044 CONCRETE



FS4045 CONCRETE



FS4046 CONCRETE



FS4047 CONCRETE



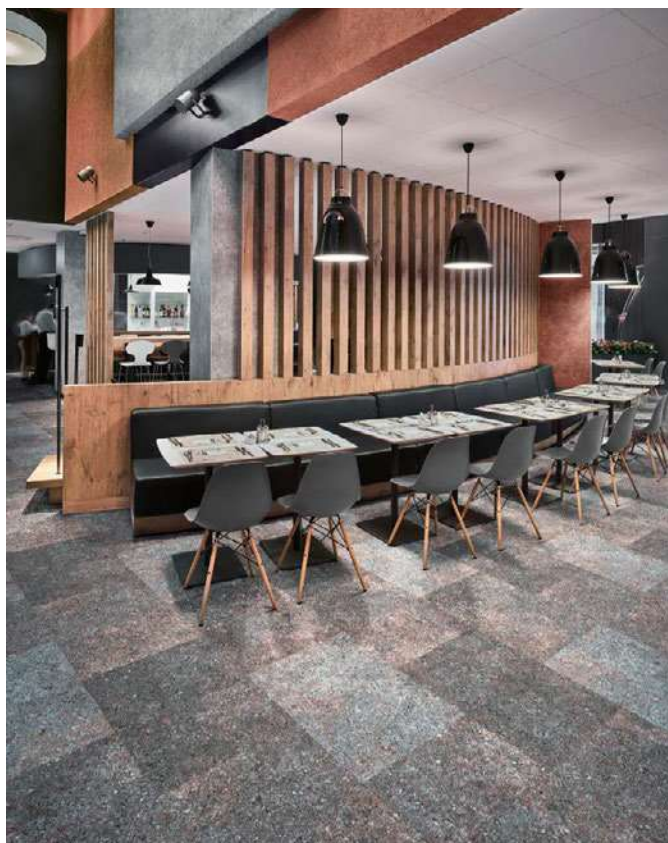
FS4048 MARBLE



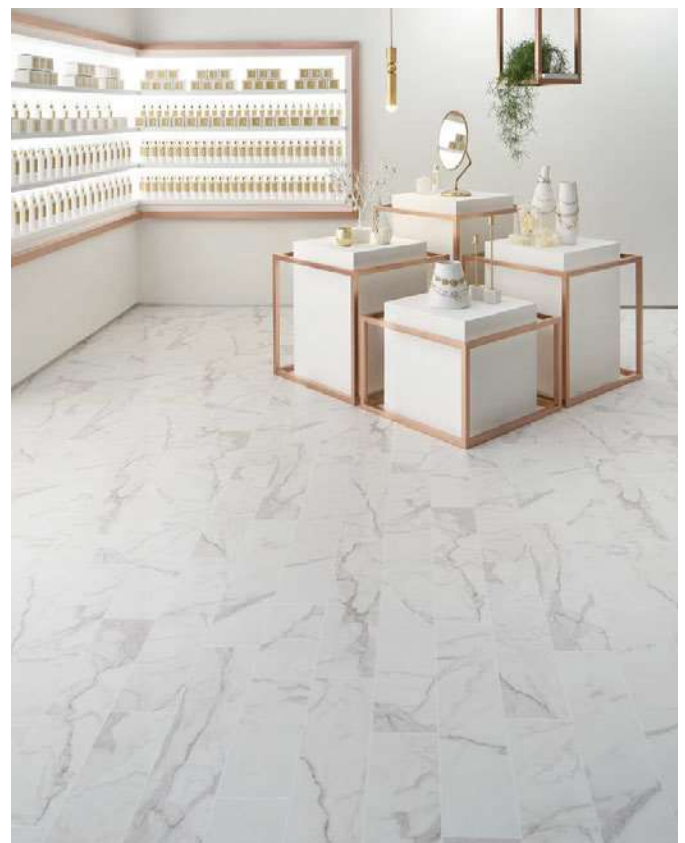
FS4049 WOOD



FS4050 MARBLE



▲ FS4046



▲ FS4050

Vinyl Sheet

MATURE NW

category: low-maintenance vinyl sheet

No need to apply the wax. Just by easy cleaning, beautiful appearance can be maintained for long. With its authentic design, MATURE NW can work well in any application.



Specification	overall thickness	2.0mm	width×length	1820mm×20m
	others	0.5mm Wear Layer / Antibacterial & Antivirus Finished / Highly Durable UV-Coated Surface		
JIS Registered No.	No. GB0506143 (JIS A 5705 Vinyl Sheet Flooring)			
Packing	20m/roll			
Net Weight	102.0kg/roll			
Performance	Wear Resistance	(EN649) Group T		
Recommended Adhesive from TOLI	See page 296.			
Welding/Seam Finish	See page 296.			
Notes on Installation	See page 296.			
Recommended Way of Maintenance from TOLI	See page 296.			
Others	See page 296.			

MADE IN JAPAN



FS4051



FS4052 CARRARA



FS4053 TERRAZZO



FS4054 TERRAZZO



FS4055



FS4056



FS4057



FS4058 MARBLE



FS4059 MARBLE



FS4060 TERRA COTTA



FS4061 MIX STONE



FS4062 QUARTZITE



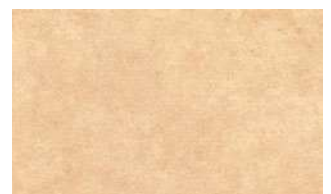
FS4063 TRAVERTINE



FS4064 TRAVERTINE



FS4065 TERRA COTTA



FS4066 TERRA COTTA

Vinyl Sheet

MATURE NW

category: low-maintenance vinyl sheet



FS4067



FS4068



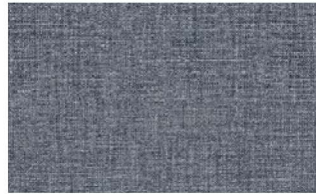
FS4069



FS4070



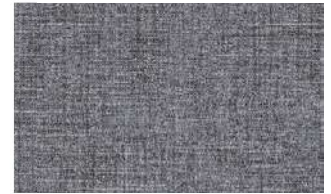
FS4071



FS4072



FS4073



FS4074



FS4075



FS4076



FS4077 CROSS WEAVE



FS4078 CROSS WEAVE



FS4079 PLAIN WEAVE



FS4080 PLAIN WEAVE



FS4081 PLAIN WEAVE



▲ FS4057



▲ FS4067/FS4070

Vinyl Sheet